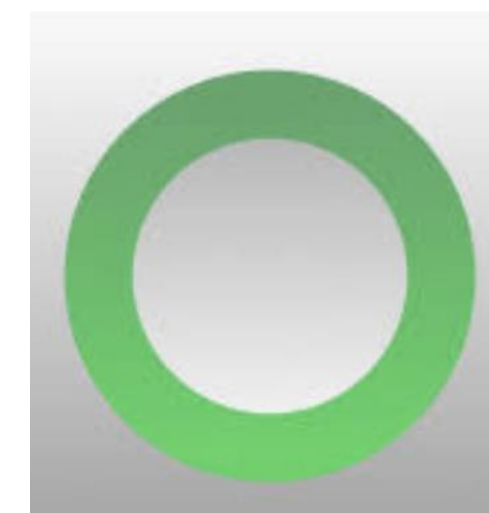


Loop AND Learn



twiist™ and Loop



October 11, 2025



Disclaimer twiist™



Loop and Learn is sponsoring this program on twiist™. twiist is an FDA-approved version of open-source Loop, which will be referred to as “Loop” in this program. Sequel, the company that markets twiist, is NOT a sponsor and has not reviewed or approved the program’s content.

This presentation is provided to help understand the differences between Loop and twiist so you can make your own diabetes self-management decisions in consultation with your healthcare professionals. Nothing you hear today from any of us speaking on this program is medical advice.

You take full responsibility for deciding which system to use and for operating that system, and for your own medical decisions. Consult your health care professionals before making any changes to your diabetes management.

Disclaimer Loop

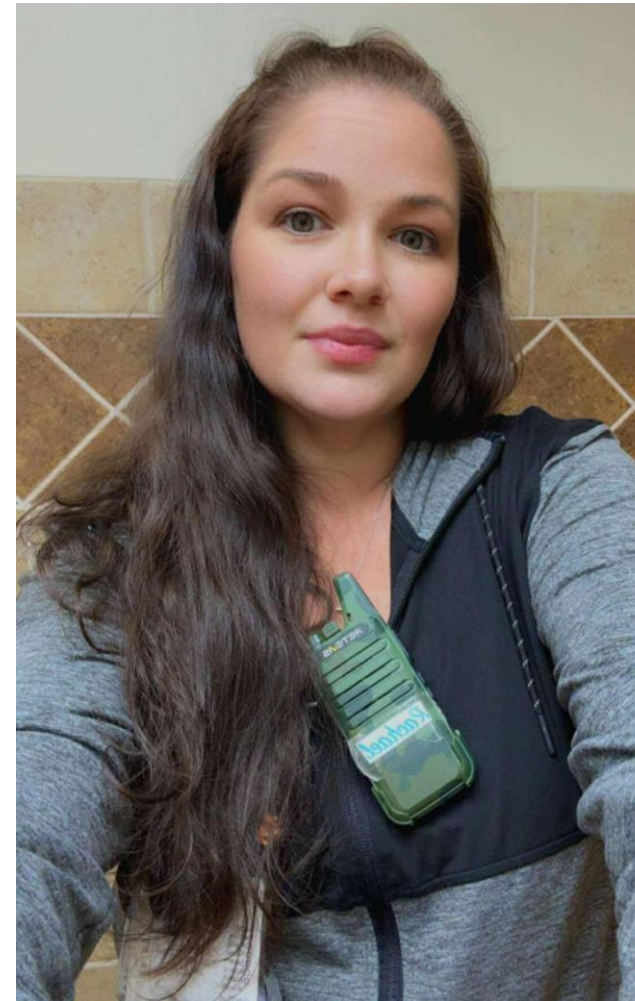


Loop is an app for a do-it-yourself closed-loop algorithm to help automate insulin delivery. It is experimental and not approved by the FDA or any other governmental authority. Patches or customizations are even more experimental. If you decide to use Loop, you take full responsibility for building and running Loop on your own.

Panel participants



Ellen Broadman
Loop - 4 years
twiist™ since 8/25/2025



Rachael McGeorge
Loop - 4 years
twiist™ since 8/21/25



Dahne Rodriguez
Loop - 1.5 years
twiist™ since 8/21/2025

Overview

- What is twiist™
 - Advantages of twiist
 - Similarities to Loop
 - What do Loopers lose
 - Travel Tips
- Loopers experience with twiist

twiist™ components

- Pump
- Cassette
- Battery
- Tubing and Buckle – 23"
- Infusion Applicator
- Syringe and Insulin vial



twiist Pump



Cleo™ Infusion Set



Battery and Charger



Pump and Tubing

- Automated Insulin Delivery
- Pump with older version of Loop
- Missing newer Loop features
- Connects with Abbott Freestyle Libre 3 Plus
- Plans to connect with Eversense in the future



Freestyle Libre 3 plus
sensor

Advantages of twiist™

- Download from App Store. No Building
- Customer support 24/7 and personal training
- FDA Approved
- twiist uses new pump – Loop uses older Omnipod or Medtronic pumps
- Button on pump for dosing
- iOS updates when issued



Cassette



Button for Manual Bolus

Advantages of twiist™ (cont.)

- Pharmacy benefit - no contractual lock-in
- Free 30-Day Starter Kit with insurance
- Bolus dosing available in 0.01 increments
- Quick alerts if blockages
- Can change infusion set using same cassette
- Maximum insulin fill is 300 units



iiSure™ Technology



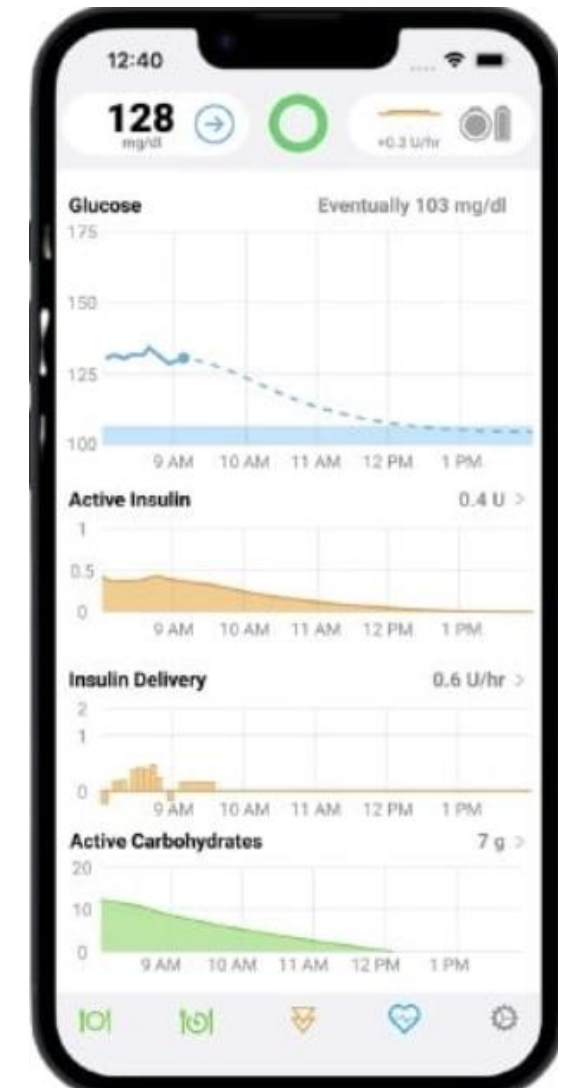
Cassette



twiist Starter Kit

What is similar to Loop?

- Phone screens and basic features
- Can set BG targets between 87 and 180
- Temp Basal and Pre-meal preset
- Shows carb absorption, active carbs and active insulin
- Can adjust carb entries later
- Exercise presets only adjusts target BG
- Apple Watch connection and dosing



twiist Screen

What do Loopers lose?

- Overrides that adjust Basal, Carb Ratio, and Insulin Sensitivity Factor
- Profiles
- Auto Bolus
- Customizations
- Algorithm Experiments
- Event History does not show deviations from scheduled Basal rate
- Ability to delete insulin and add non-pump insulin
- Nightscout: All data is in Tidepool on computer
- Caregiver Follow Alarms and Remote Commands

What do Loopers lose? (cont.)

- Reminder to change cassette
- Ability to swim or shower with pump
- Fewer steps and faster process to change Omnipod Dash
- Sugarpixel alarms
- Ability to go through X-Ray screening with pump per User Guide
- Desirable Dexcom features

Differences - Dexcom G7 and Abbott Libre 3 Plus

Differences: G7 and Libre	Dexcom G7	Abbott Libre 3 Plus
BG on Apple Watch face	Yes	No
Grace period at end of sensor life	12-Hour grace period	No grace period
Warmup time to start new sensor	30-minute warm-up	60-minute warm-up
Alarms	Silence and Vibrate Two Alarm Settings	Less control One Alarm Setting

Differences - Dexcom G7 and Abbott Libre 3 Plus

Differences: G7 and Libre	Dexcom G7	Abbott Libre 3 Plus
Hours of data on iPhone	24 Hours of data	12 Hours of data
Connection to Siri	Yes	No
Able to add calibration	Yes	No
Sensor life	10 days	15 days

Travel tips with twiist™

MUST HAVE a backup plan if traveling to locations with no Internet or Wi-Fi:

- Internet Is **REQUIRED** to pair pump and phone
- twiist continues to work without Internet until something goes wrong
- Cannot pair pump to a new phone without Internet
- Can lose the embedded Libre 3 Plus Glucose readings

Travel tips (cont.)

Options:

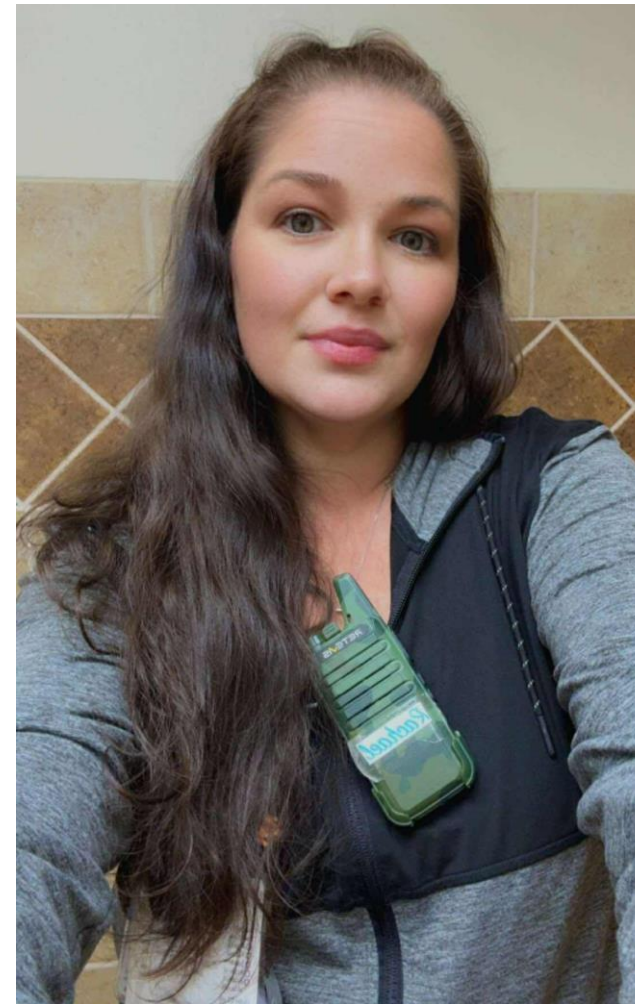
1. Bring enough Insulin Pens for travel duration. Install separate Libre App on Primary and Backup phones
2. Use Loop as a backup. Install Loop and Dexcom apps on Primary and Backup phones. Bring Loop Supplies. No Internet needed for Loop
3. Switch to DIY Loop for entire trip

NOTE: **ALWAYS Back Up** your phone before traveling. If phone is stolen, lost or damaged, settings are easily transferred

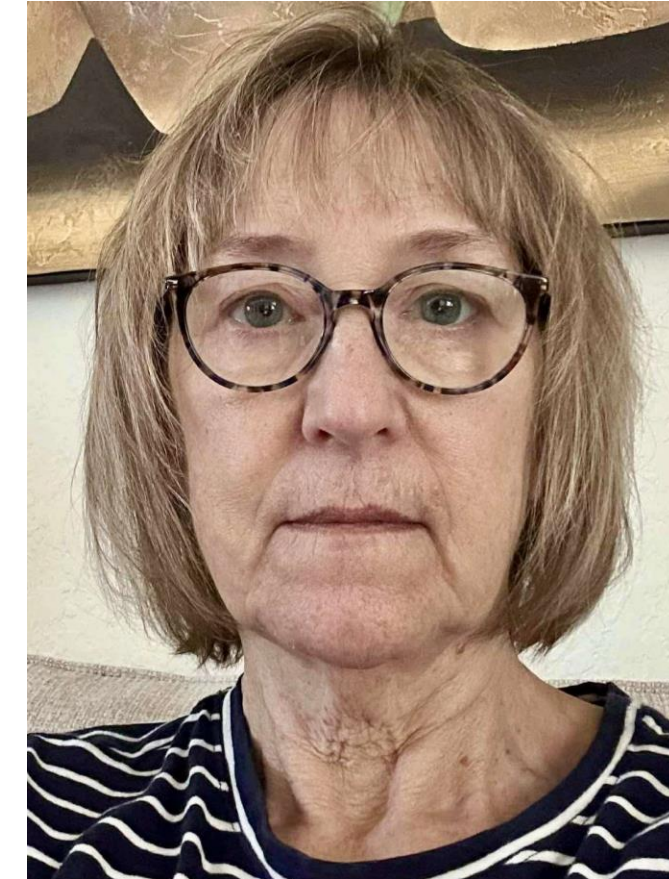
Panel participants



Ellen Broadman
Loop - 4 years
twiist™ since 8/25/2025



Rachael McGeorge
Loop - 4 years
twiist™ since 8/21/25



Dahne Rodriguez
Loop - 1.5 years
twiist™ since 8/21/2025

Nightscout Foundation

Want to support the community's volunteer efforts?
Please donate to the Nightscout Foundation

<https://www.nightscoutfoundation.org/donate>

